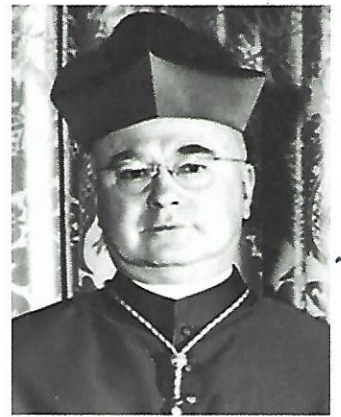


Cardinal Francis Joseph Spellman



Francis Joseph Spellman (May 4, 1889 – December 2, 1967) was an American bishop and cardinal of the Catholic Church. From 1939 until his death in 1967, he served as the sixth Archbishop of New York; he had previously served as an auxiliary bishop of the Archdiocese of Boston from 1932 through 1939. He was named a cardinal in 1946.



Registered cover mailed on 6/19/46 from Calcutta, India addressed to Cardinal Spellman.

The Cardinal Spellman Philatelic Museum was founded in 1960. The collections that make up the museum are the personal collection of Cardinal Francis Spellman, the collections from the Philadelphia National Philatelic Museum, and collections donated or loaned by other collectors. Its principal mission is to engage and teach diversity, history, and geography through its philatelic exhibits, library, resource center, and programs for children. The museum is located at 235 Wellesley Street, at Regis College, Weston, Massachusetts.

Cardinal Spellman, around 1950, wrote:

"Stamps are miniature documents of human history. They are the means by which a country gives sensible expression to its hopes and needs; its beliefs and ideals. They mirror the past and presage the future. They delineate cultural attainments, industrial works, domestic, civil and social life. In a word, these vignettes give a vivid picture of the world, its occupants and their multifarious endeavors."